

METROLOGIA
TECHNE

The best way to introduce ourselves
is by sharing with you the values
we live by every day

VALUES

The future of
measurement starts today.
Together with us.

INTUITION

INTEGRATED METROLOGY SERVICES

We are a leading metrology services provider in Italy. Our in-depth knowledge of the needs of today's market, combined with the **best instruments** and **crucial know-how**, allows us to lead the way in **metrology innovation**. Our strengths are: **calibration of measuring instruments**, **three-dimensional coordinate measurements**, **tomographic analyses** and **product testing**. Our customers operate in a wide range of fields, **from automotive to petrochemicals, healthcare and defence**.

Our focus has always been on innovation and continuous improvement.

In just 15 years we have **renewed our machine inventory five times**, but our investments extend beyond our instruments. Our workforce has grown with the addition of **fresh young minds**, and we continue to work towards obtaining **new accreditations**.

Lastly, we were selected to become part of the new research hub at the **NOI Techpark in Bolzano**, the innovation hub in South Tyrol that currently hosts 90 established companies and start-ups, 45 technology labs, 3 research institutes and 3 faculties of the Free University of Bozen-Bolzano.



EXCELLENCE

We don't settle for just doing it well;
we're committed to guaranteeing
you the best.



ACCREDIA CENTRE TEMPERATURE AND HUMIDITY

We are an accredited **ACCREDIA Centre (UNI CEI EN ISO/IEC 17025:2018)** for:

- calibration of **temperature sensors** (also on-site)
- calibration of **calibrators and temperature indicators** (also on-site)
- **calibration of hygrometers and thermo-hygrometers**

Calibration is carried out in two technologically innovative specialized laboratories, which are equipped with **air ovens, thermostatic baths, calibrators, primary sensors for temperature and humidity, multimeters, and climate chambers..**

Being an ACCREDIA accredited laboratory means we are **expert, independent and impartial**. This means a high degree of reliability of the certificates we issue in terms of the quality and safety of the tested goods and services, and ensures their recognition in international markets.



Accredited calibration services are displayed
in the Accreditation table available at
www.technemetrologia.com

UNI CEI EN ISO/IEC 17025:2018

It is the attention to detail that
makes the difference.

PRECISION

DIMENSION CALIBRATION LABORATORY

Inside a dedicated laboratory space, our technicians perform the **calibration of instruments for measuring the physical length**: from calipers to gauge blocks, height gauges, micrometers, cylindrical or conical smooth and threaded plug gauges and rings.

We use the latest machines such as the Mahr ULM600 Universal Length Measuring Machine, the ZEUSS 3000 High Precision Linear Length Measuring Machine, grade 0 ceramic gauge blocks and sets of master smooth rings with a diameter of 3 mm to 300 mm.





Professionalism
without compromise.

RIGOUR

CALIBRATION LABORATORY

In another room dedicated to the calibration service, we have various systems for **calibrating measuring instruments** for physical quantities such as **pressure, torque, force, mass, and electric current**. Our technicians use manual and automatic pressure generators, traction and compression machines, torque benches, sample weights and multifunctional generators and calibrators for electrical tests. With each calibration a specific Calibration Report that refers to ACCREDIA-certified first-line samples is issued.

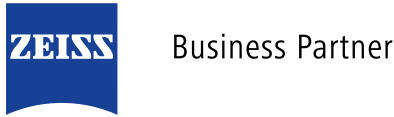
The real driving force of change is technological progress.

TECHNOLOGY

THREE-DIMENSIONAL COORDINATE MEASUREMENT LABORATORY

We have at our disposal a **three-dimensional coordinate measurement laboratory** equipped with the latest contact measurement machines with continuous scanning, optics and lasers, enabling us to perform even the most complex measurements.

Since 2021, we are a **business partner of ZEISS**, the market leader in 3D optical technology — a partnership that guarantees maximum performance and data quality.



Nothing escapes
the perceptive eye.



The new CT ZEISS Metrotom 1500 machine.

CUTTING-EDGE

COMPUTED TOMOGRAPHY

We are one of the few service providers in Italy to be equipped with two state-of-the-art X-ray tomography machines:

CT ZEISS Metrotom 800 and CT ZEISS Metrotom 1500.

Thanks to this technology, we can perform advanced non-destructive and complete **X-ray scans** on products made from different materials. Both the internal and external obtained data enables us to perform precise analyses and corrections.

With tomography, errors or defects can be detected at an early stage of development of any product, thus saving time and costs for the company.

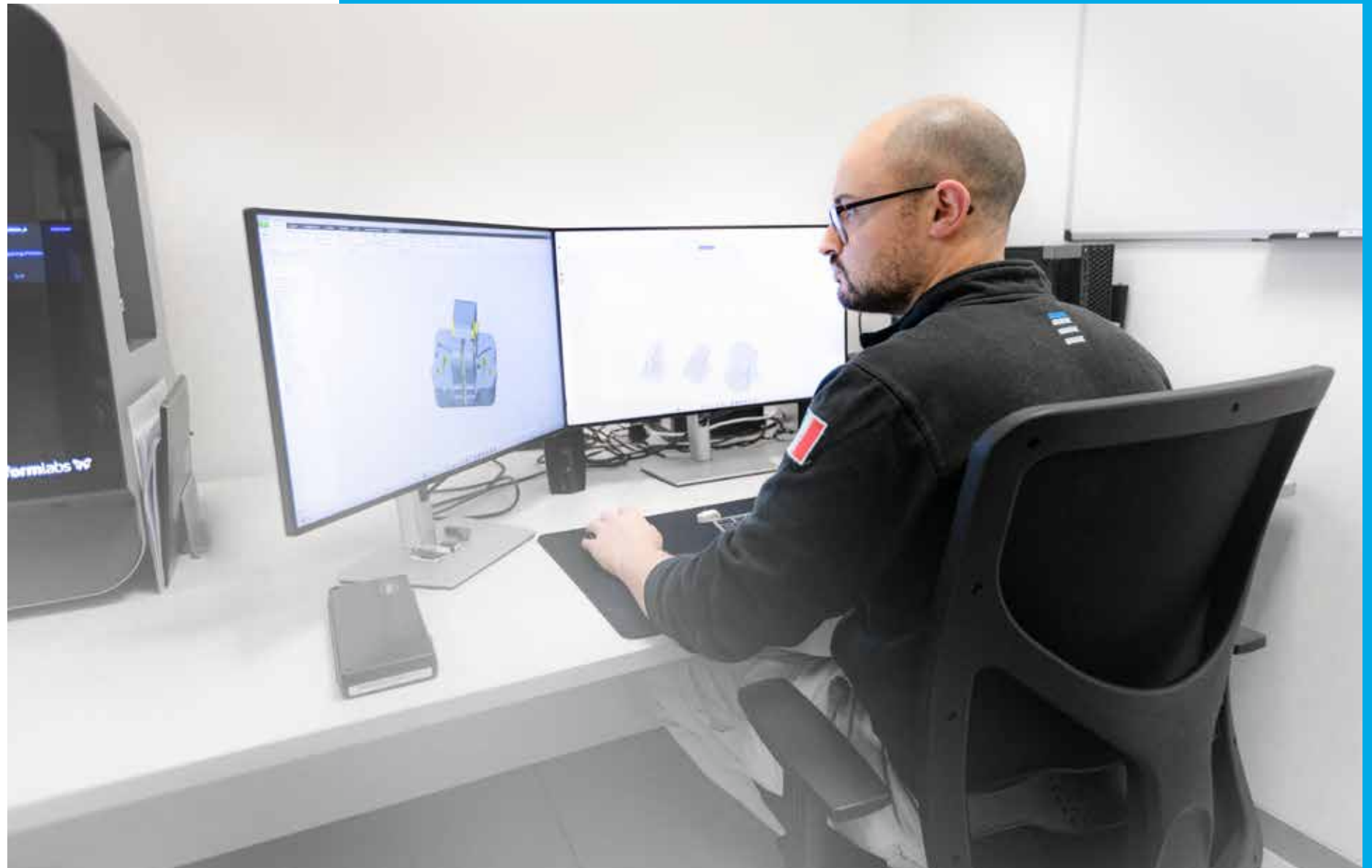
EXPERTISE

CAD MODELLING

From drafts or two-dimensional technical drawings, we calculate the geometry of any component, creating a **CAD file** (igs, stp, etc.) accompanied by the corresponding conformity report.

In the absence of 2D sketches or designs, our engineers can reconstruct the object geometry from an existing sample using **Reverse Engineering**. Control templates and mechanical equipment are designed in-house in our design department, including manufacture and subsequent delivery to the customer.

Our CAD laboratory services are rounded off with the introduction of 3D printers, that produce different types of equipment and prototypes of finished parts.



Experience and know-how
for the highest quality.

We guarantee high performing and legally compliant products.



Giuseppe Marchioni performing a lock test.

RELIABILITY

TESTING LABORATORY

We carry out laboratory **corrosion tests**, **climatic tests** and **product tests** in a dedicatedly equipped laboratory.

All tests are conducted in conditioned environments and/or on our own test benches.

We own two WEISS chambers for salt spray corrosion tests and environmental tests, that subject the product to thermal cycles with temperature variation from -40 °C to +180 °C and humidity variation from 10% to 95%.

Tensile and compression testing machines, benches for cycle tests and durability, impact and puncture tests.

Our rigorous tests verify the performance of specific materials or products, as well as their compliance with industry standards.

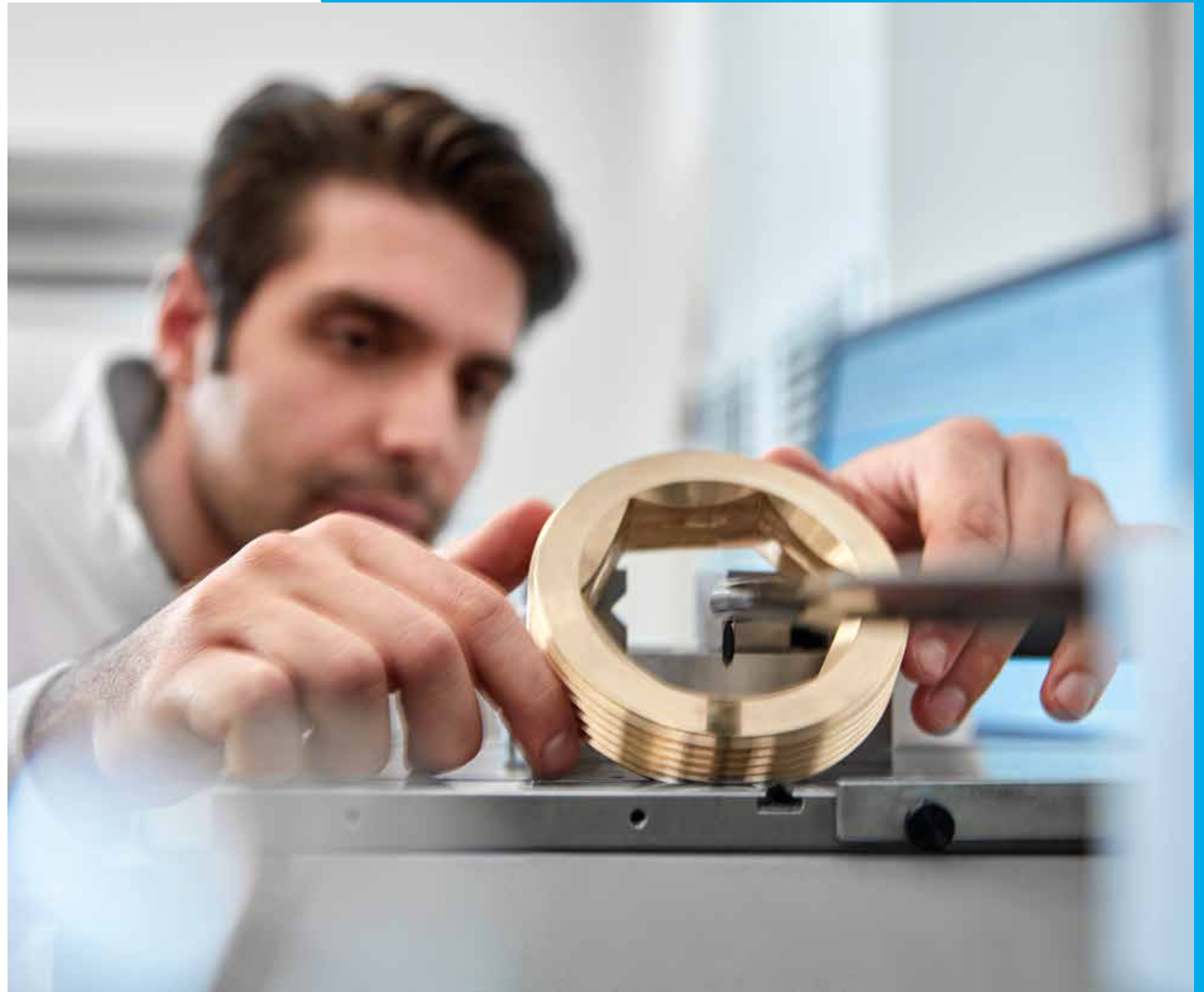
We meet every
single one of your needs.

CARE

SALE OF MEASURING INSTRUMENTS

In order to meet your measurement needs in full, we can offer support in the purchase of high-tech measuring equipment. Thanks to our partnerships with the best brands in the industry, we can supply a wide range of measuring instruments.

We guarantee our support from consultation onwards, helping you to make the right choice for your needs, all the way to after-sales. Therefore, we are able to offer you an all-round service. This is our take on maximum customer satisfaction.



We are proud to support
our local community.



AWARENESS

STRONGLY ROOTED IN THE PROVINCE OF BRESCIA

Supporting our region is a commitment that we pursue with passion and dedication.

Schools and universities. Schools and universities are incubators of talent, and it is our duty to give them our full support. Creating ties between schools and the world of work is essential to developing the future workforce.

Culture. Brescia is based on specific values: culture, art and history. That is why we support Librixia, the Brescia book fair, and are partners of the Mille Miglia Museum.

Sport. Great teams support great teams. In fact, we are the exclusive Sponsor of Pallacanestro Brescia, which has long been part of the Serie A1 of the Italian Basketball National Championship, and Top Sponsor of FC Lumezzane, a soccer team resulting from entrepreneurs “teaming up” for the common good, especially for younger generations.

**Investing now in the future yields a precise result:
being a leader in the present.**



TECHNE SRL

Brescia | Della Musia Street 97
Bolzano | c/o NOI Techpark D3, Gianni Brida Street 4

info@technometrologia.it - www.technometrologia.com